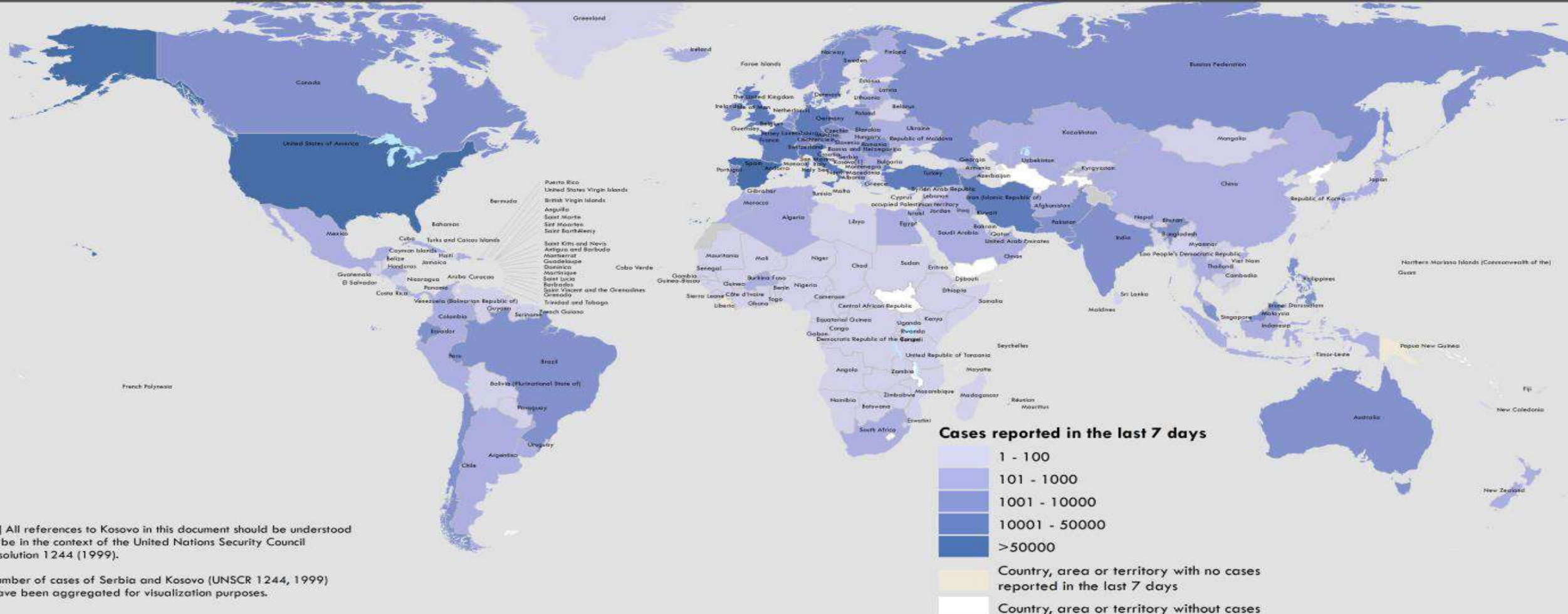


Federal ministry of health  
General directorate of emergency and  
epidemic control

**Situation Report**  
**1/April/2020**

# Global Situation

Countries, areas or territories with COVID-19 cases reported in the last 7 days  
(From 26 March 2020, 10:00AM to 01 April 2020, 10:00AM (CET))



[1] All references to Kosovo in this document should be understood to be in the context of the United Nations Security Council resolution 1244 (1999).

Number of cases of Serbia and Kosovo (UNSCR 1244, 1999) have been aggregated for visualization purposes.

Data Source: World Health Organization  
Map Production: WHO Health Emergencies Programme

Not applicable

0 2,500 5,000 km  
© World Health Organization 2020. All rights reserved.

The boundaries and names shown and the designations used on this map do not imply the expression of any opinion whatsoever on the part of the World Health Organization concerning the legal status of any country, territory, city or area or of its authorities, or concerning the delimitation of its frontiers or boundaries. Dotted and dashed lines on maps represent approximate border lines for which there may not yet be full agreement.

# Global Situation

823 626 confirmed

new confirmed (72 736)

40 598 deaths

new deaths (4193)

# Global Situation (top 10 countries)

| Reporting Country  | Total confirmed‡ cases | confirmed new cases | Total deaths | Total new deaths | Transmission classification | Days since last reported cases |
|--------------------|------------------------|---------------------|--------------|------------------|-----------------------------|--------------------------------|
| <b>USA</b>         | 163199                 | 22559               | 2850         | 452              | <b>Local transmission</b>   | <b>0</b>                       |
| <b>Italy</b>       | <b>105792</b>          | <b>4053</b>         | <b>12430</b> | <b>839</b>       | <b>Local transmission</b>   | <b>0</b>                       |
| <b>Spain</b>       | <b>94417</b>           | <b>9222</b>         | <b>8189</b>  | <b>849</b>       | <b>Local transmission</b>   | <b>0</b>                       |
| <b>China</b>       | 82631                  | 86                  | 3321         | <b>7</b>         | <b>Local transmission</b>   | <b>0</b>                       |
| <b>Germany</b>     | 67366                  | 5453                | 732          | 149              | <b>Local transmission</b>   | <b>0</b>                       |
| <b>France</b>      | 51477                  | 7500                | 3514         | 497              | <b>Local transmission</b>   | <b>0</b>                       |
| <b>Iran</b>        | 44606                  | 3111                | 2898         | 141              | <b>Local transmission</b>   | <b>0</b>                       |
| <b>U.K</b>         | 25154                  | 3009                | 1789         | 381              | <b>Local transmission</b>   | <b>0</b>                       |
| <b>Switzerland</b> | 16108                  | 696                 | 373          | 78               | <b>Local transmission</b>   | <b>0</b>                       |
| <b>Japan</b>       | 12775                  | 876                 | 705          | 102              | <b>Local transmission</b>   | <b>0</b>                       |

# Regional Situation

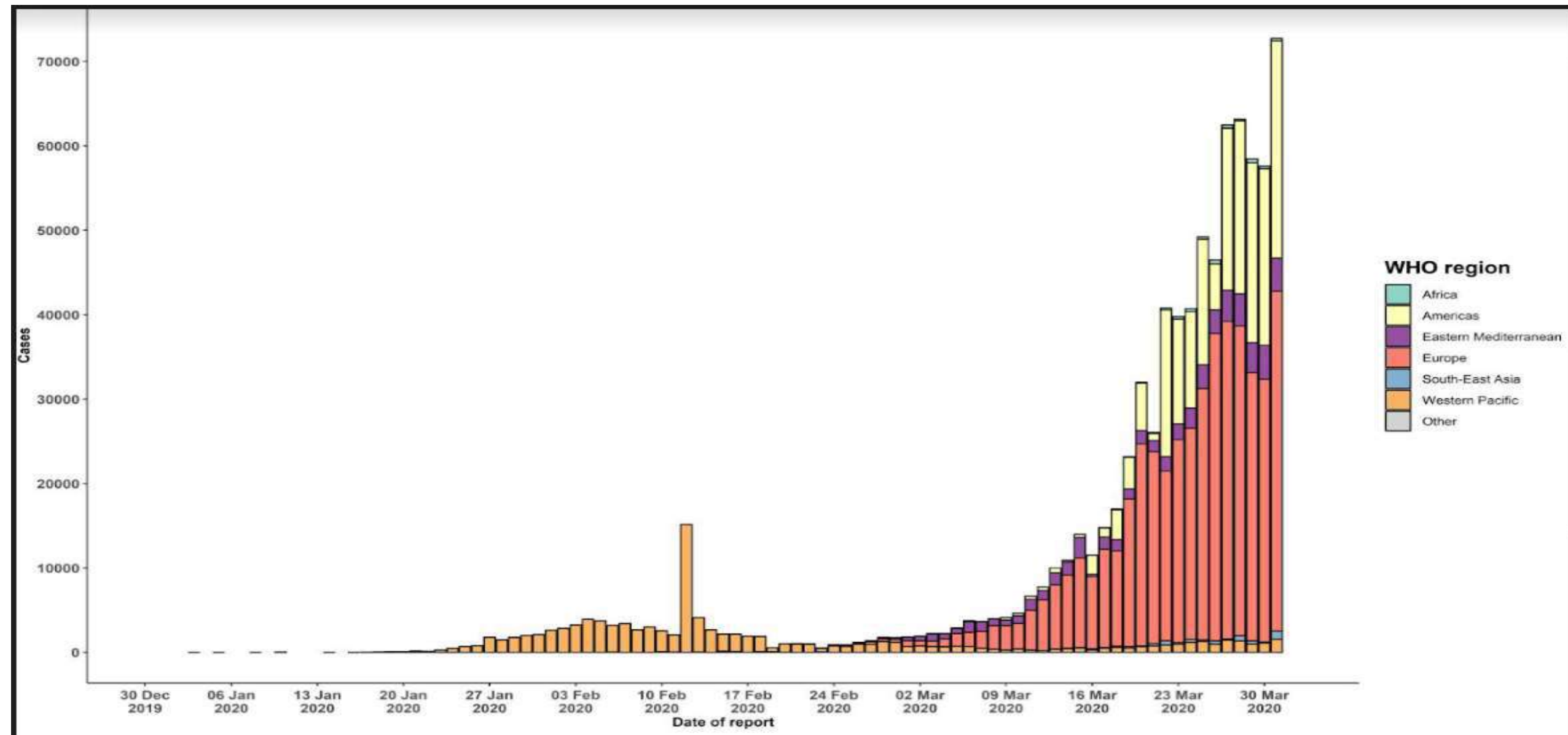
## Eastern Mediterranean Region

- 54 281 confirmed                      new confirmed (3932)
- 3115 deaths                              new deaths (161)

## African Region

- 4073 confirmed                      new confirmed (287)
- 91 deaths                              new deaths (14)

# EPI curve



# Sudan Situation

| Suspected cases/day | Deaths/ day | Cumulative # suspected cases |
|---------------------|-------------|------------------------------|
| 15                  | 0           | 127                          |

| New confirmed cases | Cumulative confirmed case | Cumulative deaths | Case fatality rate (CFR) |
|---------------------|---------------------------|-------------------|--------------------------|
| 0                   | 7                         | 2                 | 28.6                     |

## Sudan situation

| States       | Localities     | Number of cases in 1Apr 2020 |           |          | Cumulitive number.of cases up to 1Apr 2020 |           |          |
|--------------|----------------|------------------------------|-----------|----------|--|-----------|----------|
|              |                | Suspected                    | Confirmed | Deaths   | Suspected                                  | Confirmed | Deaths   |
| Khartoum     | Khartoum       | 2                            | 0         | 0        | 50   | 4         | 2        |
|              | Ombda          | 0                            | 0         | 0        | 7  | 0         | 0        |
|              | Omdurman       | 6                            | 0         | 0        | 17   | 1         | 0        |
|              | Bahri          | 2                            | 0         | 0        | 12   | 1         | 0        |
|              | Jablawlea      | 1                            | 0         | 0        | 3  | 0         | 0        |
|              | Shrgalneel     | 1                            | 0         | 0        | 4  | 1         | 0        |
|              | Karrari        | 0                            | 0         | 0        | 5  | 0         | 0        |
| <b>Total</b> |                | <b>12</b>                    | <b>0</b>  | <b>0</b> | <b>98</b>                                  | <b>7</b>  | <b>2</b> |
| N.Kordufan   | Alomead        | 0                            | 0         | 0        | 3  | 0         | 0        |
|              | Gebraalsheeekh | 0                            | 0         | 0        | 2  | 0         | 0        |
|              | Shekan         | 0                            | 0         | 0        | 3  | 0         | 0        |
|              | Baraha         | 0                            | 0         | 0        | 1  | 0         | 0        |
| <b>Total</b> |                | <b>0</b>                     | <b>0</b>  | <b>0</b> | <b>9</b>                                   | <b>0</b>  | <b>0</b> |
| W.Kordufan   | Alnohood       | 0                            | 0         | 0        | 1  | 0         | 0        |
|              | Abozabad       | 0                            | 0         | 0        | 1  | 0         | 0        |
| <b>Total</b> |                | <b>0</b>                     | <b>0</b>  | <b>0</b> | <b>2</b>                                   | <b>0</b>  | <b>0</b> |
| R.Nile       | Atbara         | 0                            | 0         | 0        | 2  | 0         | 0        |
|              | Shandi         | 1                            | 0         | 0        | 1  | 0         | 0        |
|              | Aldamar        | 1                            | 0         | 0        | 1  | 0         | 0        |
| <b>Total</b> |                | <b>2</b>                     | <b>0</b>  | <b>0</b> | <b>4</b>                                   | <b>0</b>  | <b>0</b> |
| R.Sea        | Portsudan      | 0                            | 0         | 0        | 3  | 0         | 0        |
| <b>Total</b> |                | <b>0</b>                     | <b>0</b>  | <b>0</b> | <b>3</b>                                   | <b>0</b>  | <b>0</b> |
| S.darfor     | Kass           | 0                            | 0         | 0        | 2  | 0         | 0        |
|              | Nyala          | 0                            | 0         | 0        | 1  | 0         | 0        |
| <b>Total</b> |                | <b>0</b>                     | <b>0</b>  | <b>0</b> | <b>3</b>                                   | <b>0</b>  | <b>0</b> |
| Gazera       | Wad madani     | 0                            | 0         | 0        | 1  | 0         | 0        |
|              | South gazera   | 0                            | 0         | 0        | 1  | 0         | 0        |
|              | East gazera    | 1                            | 0         | 0        | 1  | 0         | 0        |
| <b>Total</b> |                | <b>1</b>                     | <b>0</b>  | <b>0</b> | <b>3</b>                                   | <b>0</b>  | <b>0</b> |
| Kassala      | west ghash     | 0                            | 0         | 0        | 1  | 0         | 0        |
| <b>Total</b> |                | <b>0</b>                     | <b>0</b>  | <b>0</b> | <b>1</b>                                   | <b>0</b>  | <b>0</b> |
| Northan      | Marawi         | 0                            | 0         | 0        | 1  | 0         | 0        |
|              | Dalگو          | 0                            | 0         | 0        | 1  | 0         | 0        |
| <b>Total</b> |                | <b>0</b>                     | <b>0</b>  | <b>0</b> | <b>2</b>                                   | <b>0</b>  | <b>0</b> |
| W.darfor     | Algenena       | 0                            | 0         | 0        | 1  | 0         | 0        |
| <b>Total</b> |                | <b>0</b>                     | <b>0</b>  | <b>0</b> | <b>1</b>                                   | <b>0</b>  | <b>0</b> |
| N.darfor     | Alkoma         | 0                            | 0         | 0        | 1  | 0         | 0        |
| <b>Total</b> |                | <b>0</b>                     | <b>0</b>  | <b>0</b> | <b>1</b>                                   | <b>0</b>  | <b>0</b> |
| <b>Total</b> |                | <b>15</b>                    | <b>0</b>  | <b>0</b> | <b>127</b>                                 | <b>7</b>  | <b>2</b> |



# Details of confirmed cases

| Case #<br>(coded) | State    | Age | Gender |   | Transmission Classification |       | Clinical presentation |       |             |     |               | Status |
|-------------------|----------|-----|--------|---|-----------------------------|-------|-----------------------|-------|-------------|-----|---------------|--------|
|                   |          |     |        |   |                             |       | Cough                 | Fever | Sore throat | SOB | Other specify |        |
|                   |          |     | M      | F | Imported                    | Local |                       |       |             |     |               |        |
| Case 1            | Khartoum | 46  | √      |   | √                           |       | √                     | √     | √           | √   |               | death  |
| Case 2            | Khartoum | 40  | √      |   | √                           |       | √                     | √     |             |     |               |        |
| Case3             | Khartoum | 39  | √      |   | √                           |       | √                     | √     |             |     |               |        |
| Case4             | Khartoum | 67  | √      |   | √                           |       | √                     | √     |             |     |               |        |
| Case5             | Khartoum | 30  | √      |   | √                           |       | √                     | √     |             |     |               |        |
| Case6             | Khartoum | 62  | √      |   | √                           |       | √                     | √     | √           | √   |               | death  |
| Case7             | Khartoum | 65  | √      |   | √                           |       |                       | √     | √           |     |               |        |

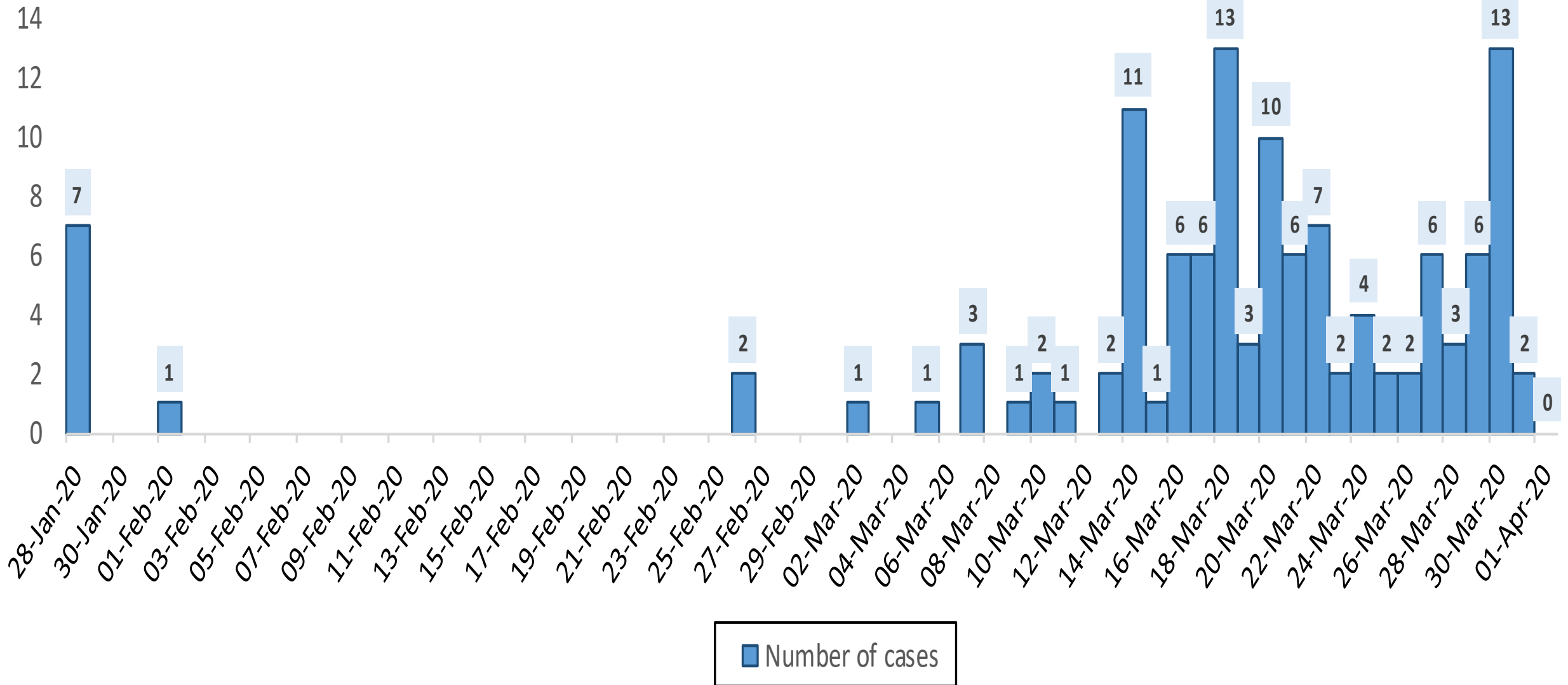
# Isolation centres/wards up to 1st April 2020

| State          | No of ICT s | Capacity (Beds) | Admissions | Suspected cases | Discharged | Isolation at home |
|----------------|-------------|-----------------|------------|-----------------|------------|-------------------|
| Khartoum       | 2           | 80              | 4          | 1               | 0          | -                 |
| Gazera         | 0           | 0               | 0          | 0               | 0          | 0                 |
| Kassala        | 0           | 0               | 0          | 0               | 0          | 21                |
| Red Sea        | 0           | 0               | 0          | 0               | 0          | 0                 |
| River Nile     | 0           | 0               | 0          | 0               | 0          | 6                 |
| North Kordufan | 0           | 0               | 0          | 0               | 0          | 7                 |
| West Darfour   | 0           | 0               | 0          | 0               | 0          | 0                 |
| North Darfur   | 0           | -               | 0          | 0               | 0          | 0                 |
| Total          | 2           | 80              | 4          | 1               | 0          |                   |

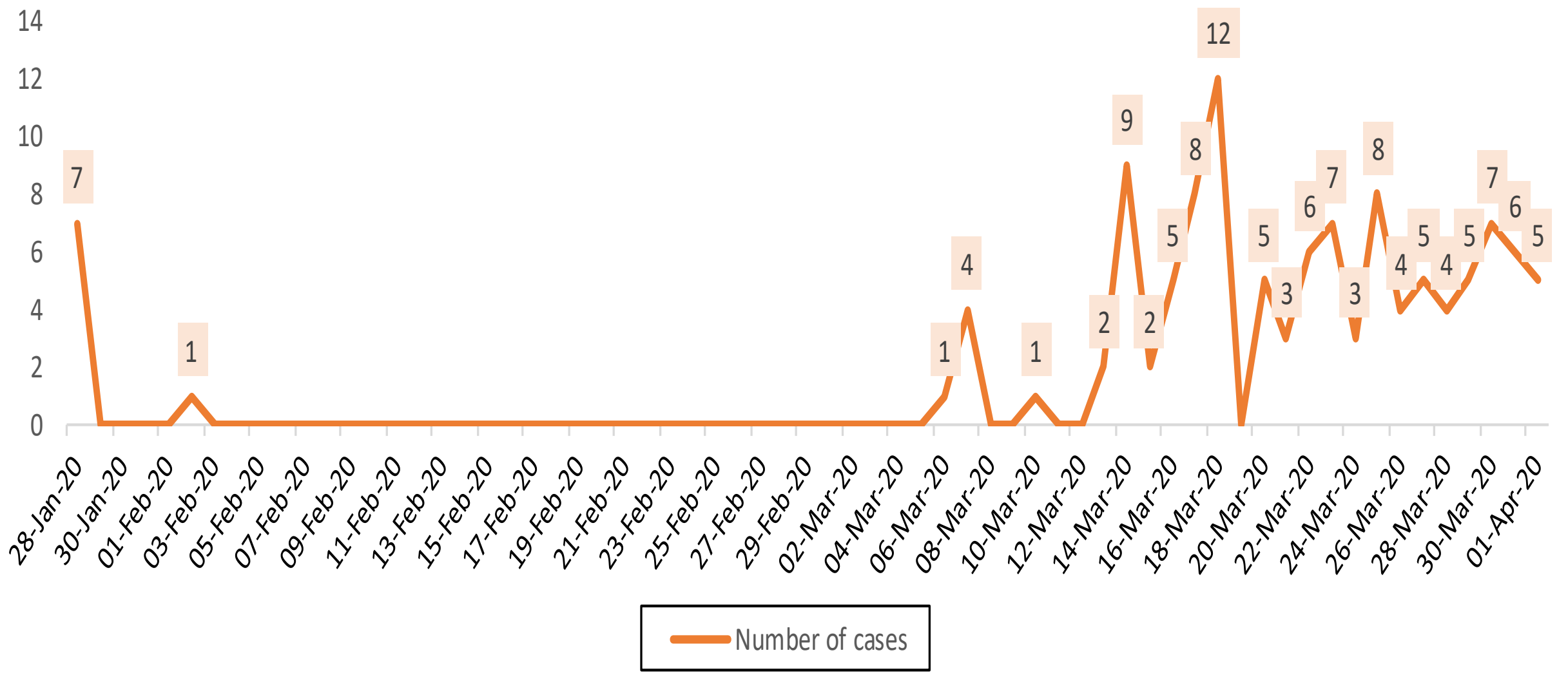
# Contact tracing

| No. of case | No. of contacts | Quarantine |          | Isolation | passengers | Others    |
|-------------|-----------------|------------|----------|-----------|------------|-----------|
|             |                 | Home       | Facility |           |            |           |
| Case 1      | 44              | 39         | 5        | 0         |            |           |
| Case 2      | 8               | 8          | 0        | 0         |            |           |
| Case 3      | 161             | 5          | 0        | 2         | 154        |           |
| Case4       | 233             | 9          | 0        | 0         | 223        | 1Driver   |
| Case5       | 146             | 7          |          |           | 145        | 4 Friends |
| Case6       | 12              | 12         | 0        | 0         |            |           |
| Case7       |                 |            |          |           |            |           |

# Distribution of suspected cases of Covid-19 by date of onset up to 1 Apr 2020

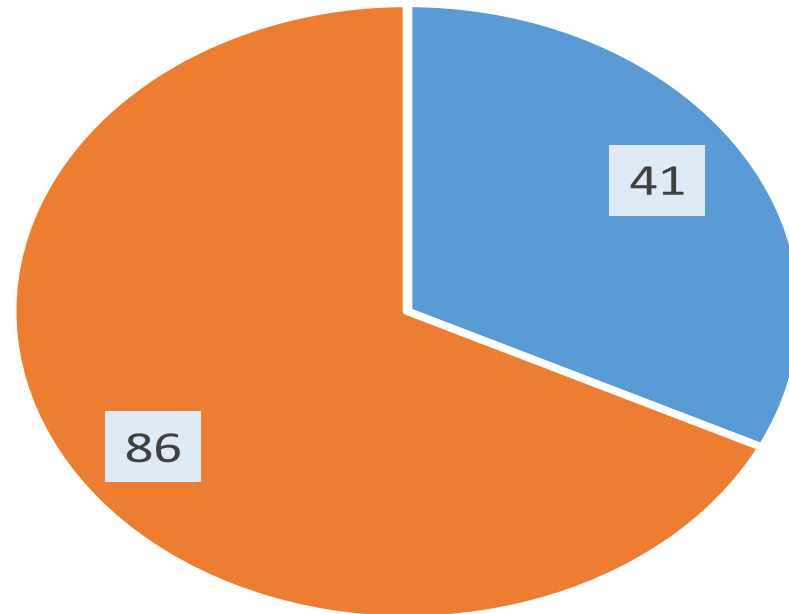


Distribution of suspected cases of Covid-19 by date of admission up to 1 Apr 2020



Distribution of suspected cases of covid-19 by gender up to 1  
Apr 2020

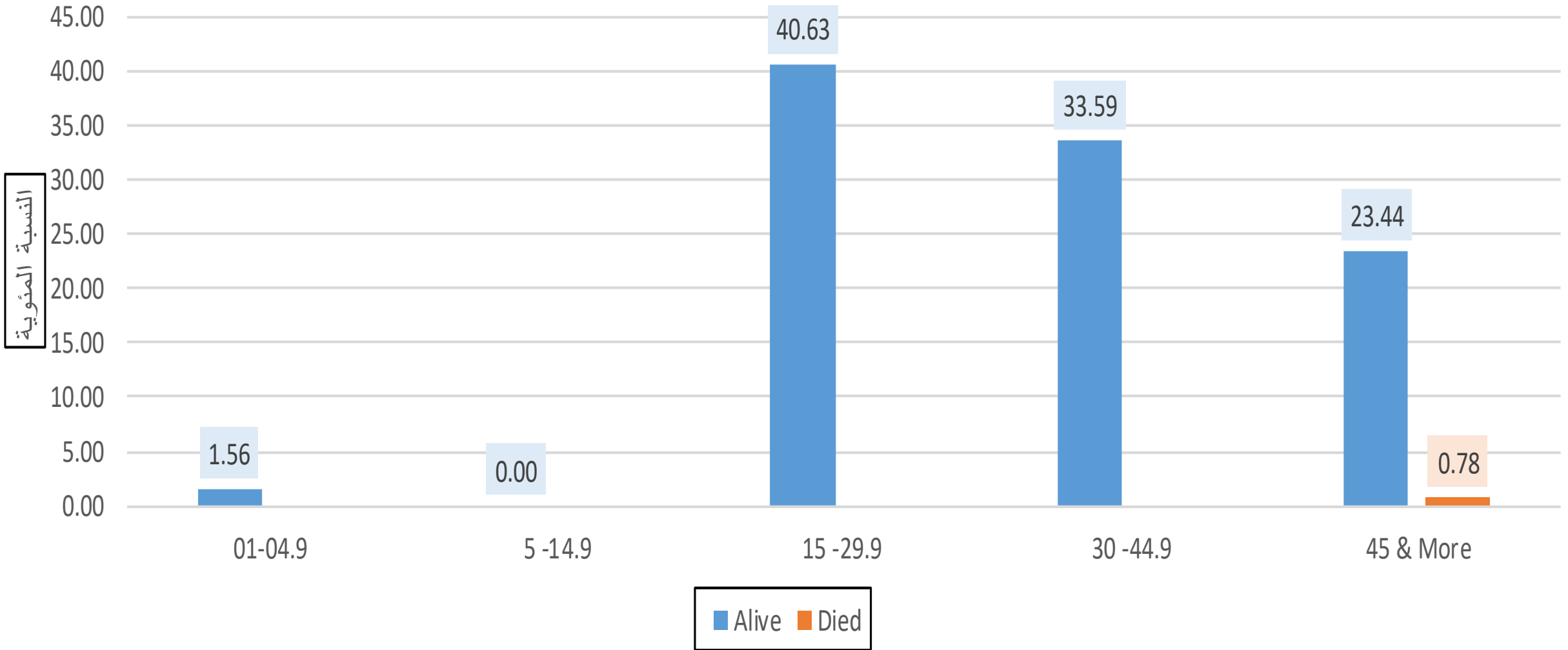
N=127



■ Female ■ Male

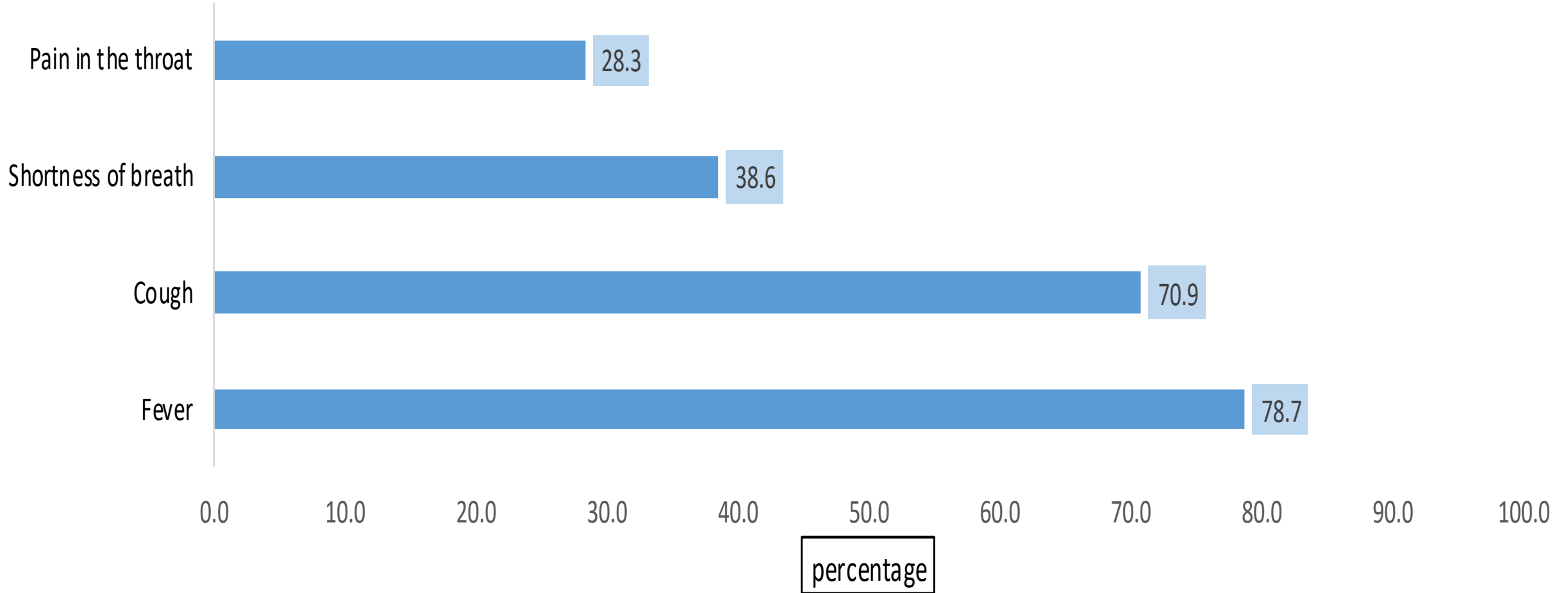
Distribution of suspected cases of covid-19 by age group and general situation up to 1 Apr 2020

N=127



Distribution of suspected cases of covid-19 according to symptoms and signs up to 1 Apr2020

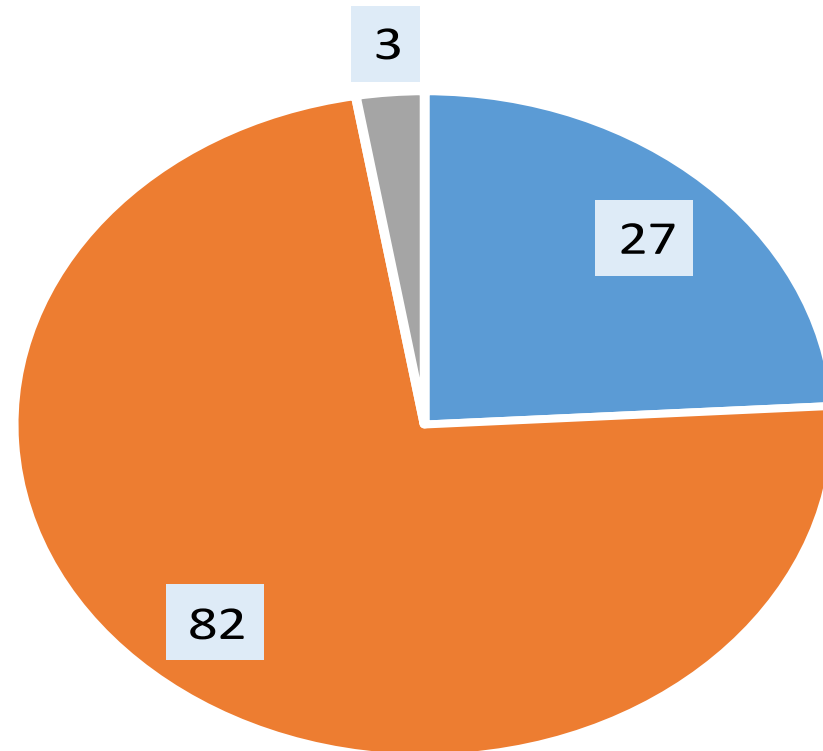
N=127





Classification of suspected cases of Covid-19 up to 1 Apr

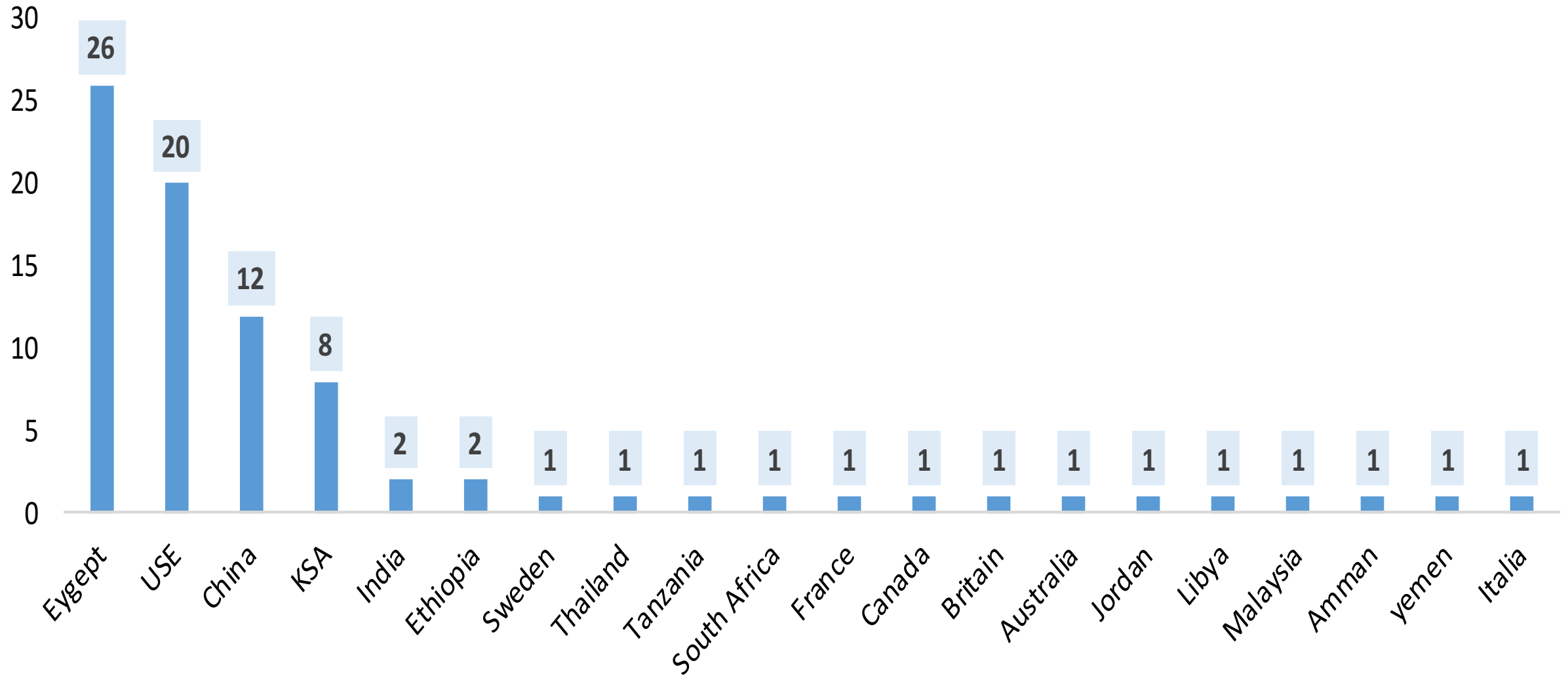
N=127



■ Contact ■ Traveler ■ resident

Distribution of suspected cases of Covid-19 by country of arrival up to 1 Apr 2020

N=127



# Laboratory results

| States     | Localities     | Number of cases | Number of samples | Sample Result |           |           |          | Comments |
|------------|----------------|-----------------|-------------------|---------------|-----------|-----------|----------|----------|
|            |                |                 |                   | Positive      | Negative  | Pending   | Rejected |          |
| Khartoum   | Khartoum       | 50              | 48                | 4             | 37        | 6         | 0        |          |
|            | Ombda          | 7               | 7                 | 0             | 6         | 1         | 0        |          |
|            | Omdurman       | 17              | 17                | 1             | 8         | 1         | 0        |          |
|            | Bahri          | 12              | 12                | 1             | 8         | 1         | 0        |          |
|            | Jablawlea      | 3               | 2                 | 0             | 2         | 0         | 0        |          |
|            | Shrgalneel     | 4               | 3                 | 1             | 1         | 1         | 0        |          |
|            | Karrari        | 5               | 5                 | 0             | 3         | 2         | 0        |          |
|            | <b>Total</b>   | <b>98</b>       | <b>94</b>         | <b>7</b>      | <b>65</b> | <b>12</b> | <b>0</b> |          |
| N.Kordufan | Alomead        | 3               | 0                 | 0             | 0         | 0         | 0        |          |
|            | Gebraalsheeakh | 2               | 2                 | 0             | 0         | 0         | 2        |          |
|            | Shekan         | 3               | 2                 | 0             | 2         | 0         | 0        |          |
|            | Baraha         | 1               | 1                 | 0             | 0         | 1         | 0        |          |
|            | <b>Total</b>   | <b>9</b>        | <b>5</b>          | <b>0</b>      | <b>2</b>  | <b>1</b>  | <b>2</b> |          |
| W.Kordufan | Alnohood       | 1               | 1                 | 0             | 1         | 0         | 0        |          |
|            | Abozabad       | 1               | 1                 | 0             | 1         | 0         | 0        |          |
|            | <b>Total</b>   | <b>2</b>        | <b>2</b>          | <b>0</b>      | <b>2</b>  | <b>0</b>  | <b>0</b> |          |
| R.Nile     | Atbara         | 2               | 1                 | 0             | 0         | 1         | 0        |          |
|            | Shandi         | 1               | 1                 | 0             | 0         | 1         | 0        |          |
|            | Aldamar        | 1               | 0                 | 0             | 0         | 1         | 0        |          |
|            | <b>Total</b>   | <b>4</b>        | <b>2</b>          | <b>0</b>      | <b>0</b>  | <b>1</b>  | <b>0</b> | <b>0</b> |
| R.Sea      | Portsudan      | 3               | 3                 | 0             | 3         | 0         | 0        |          |
|            | <b>Total</b>   | <b>3</b>        | <b>3</b>          | <b>0</b>      | <b>3</b>  | <b>0</b>  | <b>0</b> |          |
| S.darfor   | Kass           | 2               | 2                 | 0             | 2         | 0         | 0        |          |
|            | Nyala          | 1               | 1                 | 0             | 0         | 1         | 0        |          |
|            | <b>Total</b>   | <b>3</b>        | <b>3</b>          | <b>0</b>      | <b>2</b>  | <b>1</b>  | <b>0</b> |          |
| Gazera     | Wad madani     | 1               | 1                 | 0             | 1         | 0         | 0        |          |
|            | South gazera   | 1               | 1                 | 0             | 1         | 0         | 0        |          |
|            | East gazera    | 1               | 1                 | 0             | 1         | 0         | 0        |          |
|            | <b>Total</b>   | <b>3</b>        | <b>2</b>          | <b>0</b>      | <b>2</b>  | <b>0</b>  | <b>0</b> |          |
| Kassala    | west ghash     | 1               | 1                 | 0             | 1         | 0         | 0        |          |
|            | <b>Total</b>   | <b>1</b>        | <b>1</b>          | <b>0</b>      | <b>1</b>  | <b>0</b>  | <b>0</b> |          |
| Northan    | Marawi         | 1               | 0                 | 0             | 0         | 0         | 0        |          |
|            | Dalgo          | 1               | 1                 | 0             | 0         | 1         | 0        |          |
|            | <b>Total</b>   | <b>2</b>        | <b>0</b>          | <b>0</b>      | <b>0</b>  | <b>0</b>  | <b>0</b> |          |
| W.darfor   | Algenena       | 1               | 1                 | 0             | 1         | 0         | 0        |          |
|            | <b>Total</b>   | <b>1</b>        | <b>1</b>          | <b>0</b>      | <b>1</b>  | <b>0</b>  | <b>0</b> |          |
| N.darfor   | Alkoma         | 1               | 1                 |               |           | 1         |          |          |
|            | <b>Total</b>   | <b>1</b>        | <b>1</b>          | <b>0</b>      | <b>0</b>  | <b>1</b>  | <b>0</b> |          |
|            | <b>Total</b>   | <b>127</b>      | <b>114</b>        | <b>7</b>      | <b>78</b> | <b>16</b> | <b>2</b> |          |

# Arrivals follow –up

## In 31Mar 2020

- Total Number of arrivals : 0
- Total Number who were contacted: 0
- Percentage: 0.0
- Respondents to call:0
- Percentage: 0.0

## Arrivals with in 14 days of follow up until to 31Mar 2020

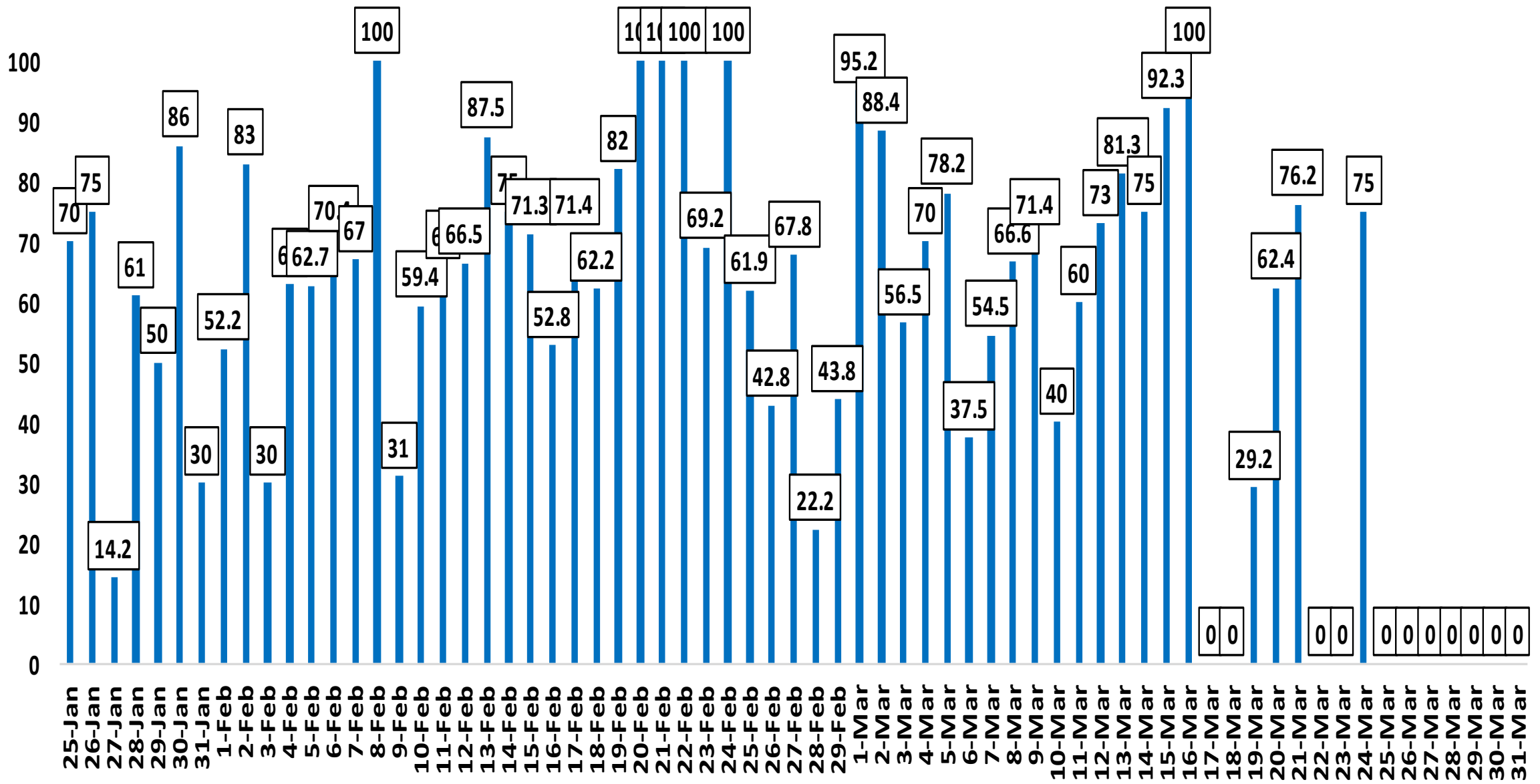
- Cumulative of arrivals : 2251
- Cumulative who were contacted 2251
- Percentage: 100
- Cumulative Respondents to call:1781
- Percentage: 80.4

## Cumulative Arrivals From 25 Jan up to 31Mar 2020

- Cumulative of arrivals : 2833
- Cumulative who were contacted : 2833
- Percentage: 100
- Cumulative Respondents to call:2165
- Percentage76

Daily follow-up percentage for arrivals by days from 25 January up to 31 March, 2020

النسبة

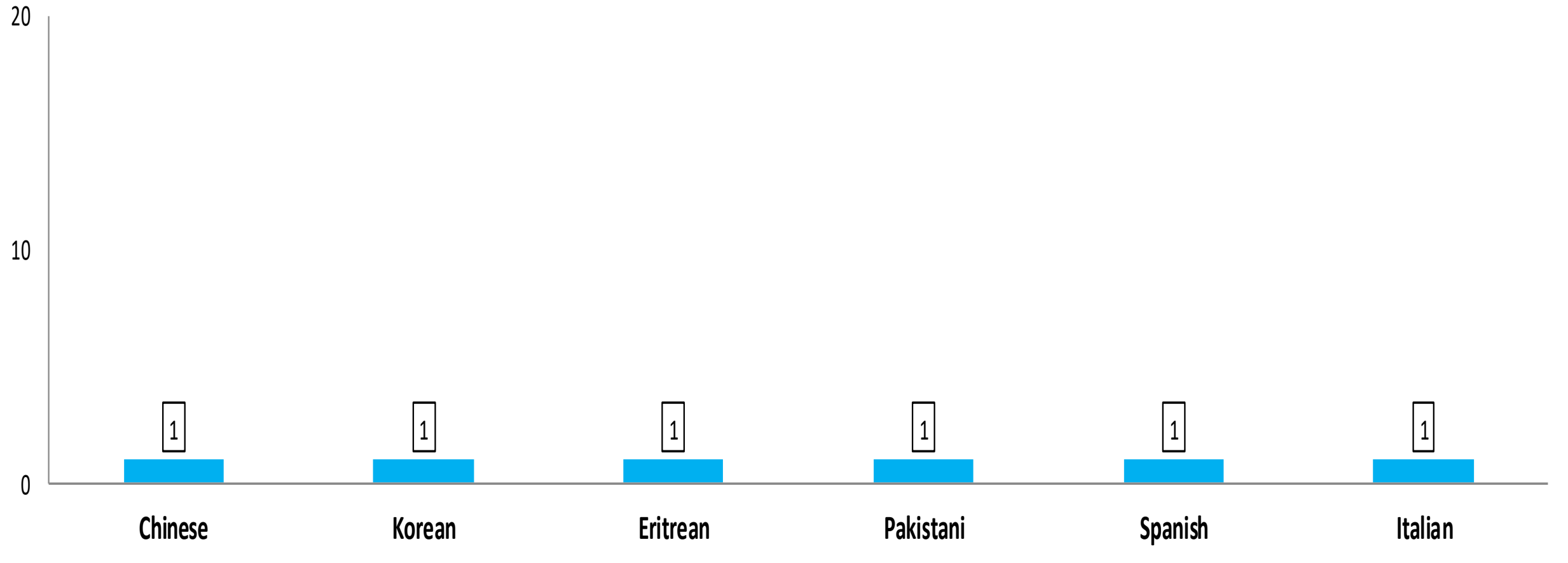




# Distribution of arrivals by states up to 31 March 2020

| States         | Number of arrivals on 30 Mar 2020 | Number of follow | % | who had symptoms | Number of arrivals with in 14 follow up days up to 30 Mar 2020 | Number of follow up with in 14 days to 31 Mar 2020 | %           | who had symptoms |
|----------------|-----------------------------------|------------------|---|------------------|--|--|-------------|------------------|
| khartoum       | 0                                 | 0                |   | 0                | 1692   | 1467   | 86.7        | 0                |
| Gazira         | 0                                 | 0                |   | 0                | 161  | 120  | 74.5        | 0                |
| Sennar         | 0                                 | 0                |   | 0                | 50   | 30   | 60.0        | 0                |
| WhiteNile      | 0                                 | 0                |   | 0                | 39   | 30   | 76.9        | 0                |
| Kassala        | 0                                 | 0                |   | 0                | 98   | 47   | 48.0        | 0                |
| Northen state  | 0                                 | 0                |   | 0                | 31   | 19   | 61.3        | 0                |
| North Darfour  | 0                                 | 0                |   | 0                | 6  | 3  | 50.0        | 0                |
| North Kordofan | 0                                 | 0                |   | 0                | 23   | 18   | 78.3        | 0                |
| Gadaref        | 0                                 | 0                |   | 0                | 32   | 6  | 18.8        | 0                |
| Red sea        | 0                                 | 0                |   | 0                | 23   | 7  | 30.4        | 0                |
| South Darfour  | 0                                 | 0                |   | 0                | 13   | 5  | 38.5        | 0                |
| River Nile     | 0                                 | 0                |   | 0                | 35   | 25   | 71.4        | 0                |
| Weast Darfour  | 0                                 | 0                |   | 0                | 3  | 1  | 33.3        | 0                |
| BlueNile       | 0                                 | 0                |   | 0                | 6  | 1  | 16.7        | 0                |
| Center Darfour | 0                                 | 0                |   | 0                | 3  | 2  | 66.7        | 0                |
| <b>Total</b>   | <b>0</b>                          | <b>0</b>         |   | <b>0</b>         | <b>2215</b>  | <b>1781</b>  | <b>80.4</b> | <b>0</b>         |

Distribution of arrivals in the follow-up period (14 days) by nationality, up to March 31, 2020



Number of Sudanese 2236 Sudanese

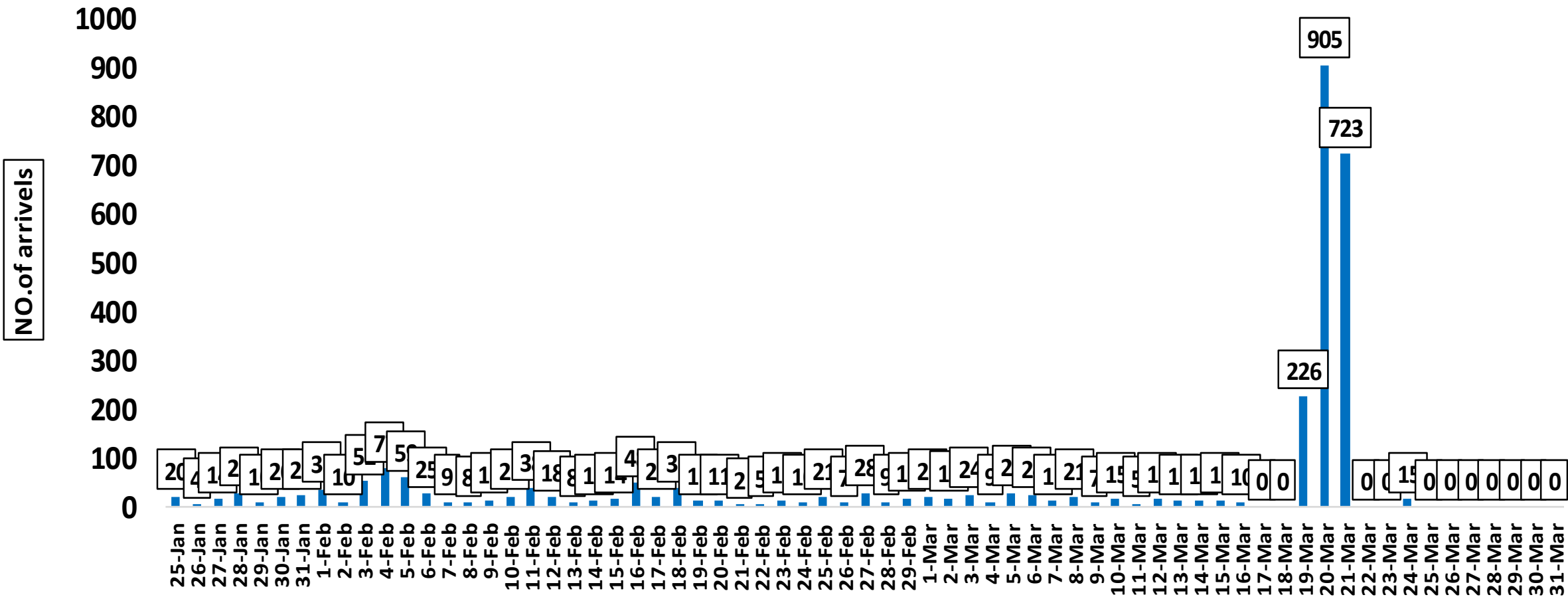


Reasons of not following up-up to 31 March 2020:

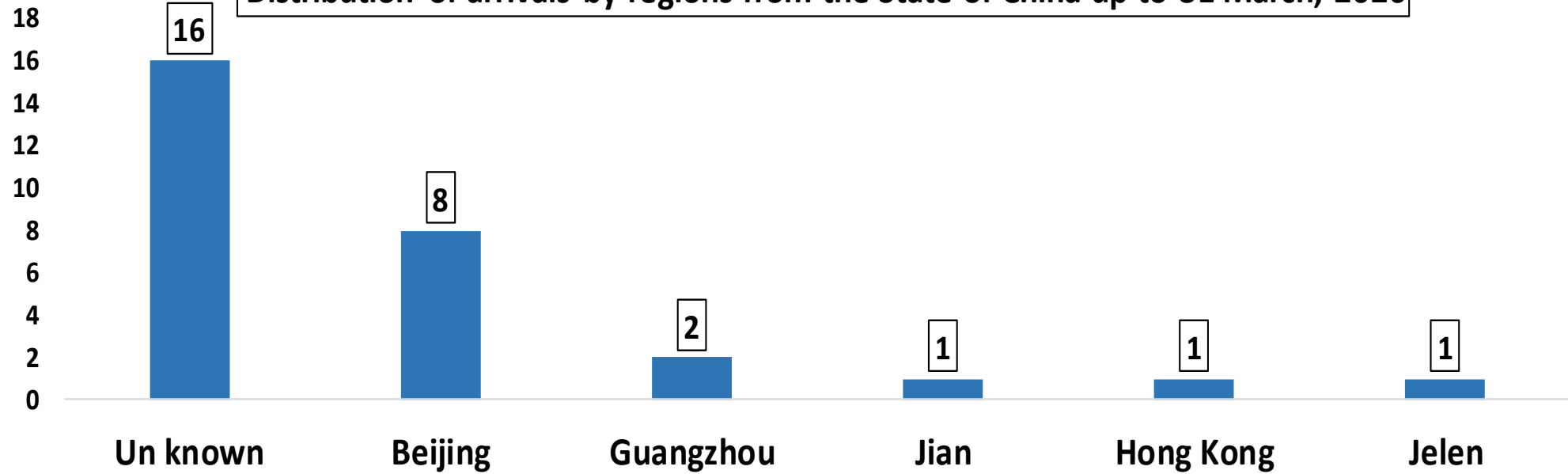
**Reasons of not following up from 15 march up on 31 march 2020**

| <b>Lang problem</b> | <b>Out of service</b> | <b>Closed number</b> | <b>No answer</b> | <b>Wrong number</b> | <b>No number</b> |
|---------------------|-----------------------|----------------------|------------------|---------------------|------------------|
| <b>1</b>            | <b>94</b>             | <b>166</b>           | <b>49</b>        | <b>101</b>          | <b>23</b>        |

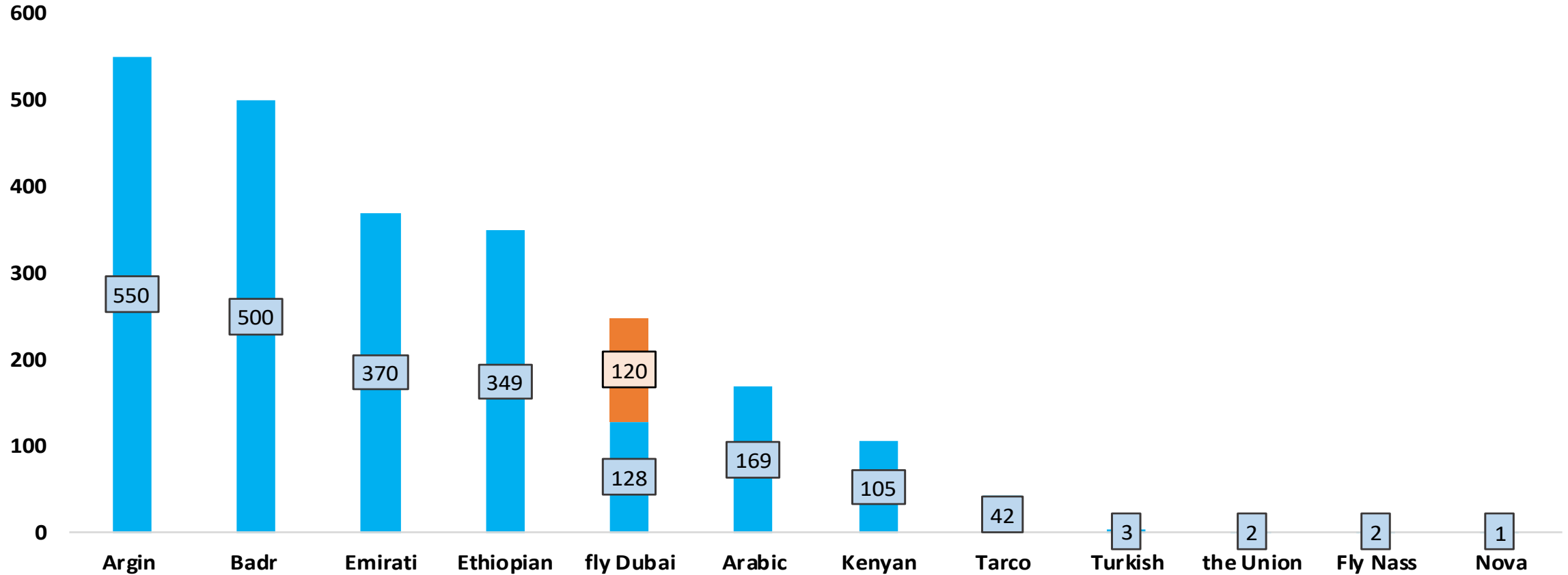
Distribution of arrivals by days from 25 January up to 31 March , 2020



Distribution of arrivals by regions from the State of China up to 31 March, 2020



Distribution of arrivals by airlines from 16 March up to March 31, 2020



120 Students from Ouhan has been followed by whatsapp group

# Quarantine status

| State    | Facility Name | No of Admissions | Existent | No symptoms | Transferred to Isolation | Discharged after 14 days |
|----------|---------------|------------------|----------|-------------|--------------------------|--------------------------|
| Khartoum | Burj Aldaman  | 0                | 0        | 0           | 0                        | 0                        |
|          | Universal     | 26               | 26       | 26          | 0                        | 0                        |
| Total    |               | 26               | 26       | 26          | 0                        | 0                        |

# Health promotion activities

# Capacity building(Training) at States levels

| States         | Health promoters Train |            |           |
|----------------|------------------------|------------|-----------|
|                | Target                 | achieve    | %         |
| Gedaref        | 20                     | 20         | 100       |
| River Nile     | 75                     | 25         | 33        |
| South Kordufan | 35                     | 35         | 100       |
| North Darfur   | 10                     | 10         | 100       |
| Kassala        | 35                     | 35         | 100       |
| <b>Total</b>   | <b>175</b>             | <b>125</b> | <b>71</b> |

# Social mobilization and communication

| States                | Social Media |            |            | mobile microphone |            |           |
|-----------------------|--------------|------------|------------|-------------------|------------|-----------|
|                       | Target       | achieve    | %          | Target            | achieve    | %         |
| Gedaref               | 7            | 7          | 100        | 32                | 32         | 100       |
| <b>Gazera</b>         | 35           | 35         | 100        | 5                 | 5          | 100       |
| <b>East Darfur</b>    | 30           | 30         | 100        | 50                | 50         | 100       |
| <b>Wait Nile</b>      | 10           | 10         | 100        | 85                | 85         | 100       |
| <b>River Nile</b>     | 26           | 26         | 100        | 23                | 6          | 26        |
| <b>Northan</b>        | 10           | 10         | 100        | 21                | 21         | 100       |
| <b>Khartoum</b>       | 8            | 8          | 100        | 98                | 98         | 100       |
| <b>Blue Nile</b>      | 5            | 5          | 100        | -                 | -          | 57        |
| <b>South Kordufan</b> | 9            | 9          | 100        | -                 | -          | 100       |
| <b>Central Darfur</b> | 10           | 10         | 100        | -                 | -          | 100       |
| <b>South Darfur</b>   | 2            | 2          | 100        | -                 | -          | 100       |
| <b>North Kordufan</b> | 9            | 9          | 100        | -                 | -          | 100       |
| <b>Kassala</b>        | 4            | 4          | 100        | 9                 | 9          | 100       |
| <b>North Darfur</b>   | 50           | 50         | 100        | 140               | 32         | 23        |
| <b>Total</b>          | <b>215</b>   | <b>215</b> | <b>100</b> | <b>463</b>        | <b>338</b> | <b>73</b> |



# Printing distribution

| States              | Posters |             |           | Fliers |         |           |
|---------------------|---------|-------------|-----------|--------|---------|-----------|
|                     | Target  | achieve     | %         | Target | achieve | %         |
| Gedaref             | 100     | 100         | 100       | 800    | 800     | 100       |
| Khartom             | 2829    | 2829        | 100       | 11092  | 11092   |           |
| <b>Gazera</b>       | 313     | 484         | 155       | 290    | 295     | 102       |
| <b>Blue Nile</b>    | -       | -           | -         | 1750   | 50      | 3         |
| <b>Wait Nile</b>    | 461     | 461         | 100       | 750    | 750     | 100       |
| <b>Kassala</b>      | -       | -           | -         | 180    | 180     | 100       |
| <b>River Nile</b>   | -       | -           | -         | 995    | 1327    | 133       |
| <b>North Darfur</b> | -       | -           | -         | 15500  | 2000    | 13        |
| <b>Total</b>        | 3874    | <b>3703</b> | <b>95</b> | 31357  | 16494   | <b>52</b> |

# Broadcasting of song messages at Radio and TV

| States         | Daily Radio Broadcast | Daily TV Broadcast |
|----------------|-----------------------|--------------------|
| South Darfur   | 3                     | -                  |
| East Darfur    | 6                     | -                  |
| River Nile     | 15                    | -                  |
| Gedaref        | 10                    | 5                  |
| Gazera         | 30                    | 30                 |
| North Kordufan | 7                     | 5                  |
| Red Sea        | 8                     | 30                 |
| Wait nile      | 5                     | -                  |
| South Kordufan | 3                     | -                  |
| Blue Nile      | 4                     | 2                  |
| Northan        | 6                     | 6                  |
| Kassala        | 4                     | 4                  |
| Central Darfur | 6                     | -                  |
| West Kordufan  | 6                     | -                  |
| North Darfur   | 10                    | 5                  |

# Mass Media coverage

| الولاية      | الوسيط    | البرنامج                  | فترة البث  | شكل التناول   | الضيف  |
|--------------|-----------|---------------------------|------------|---|--|
| النيل الابيض | الاذاعة   | نشرة اخبارية              | 6:00 مساء  | الموقف الوبائي ودور المبادرات والمساعدات التي تقدمها      | مدير تنفيذي محلية ام رمتة ومبادرة شباب ربك       |
| وسط دارفور   | الاذاعة   | رسائل مشاعل               | مدار اليوم |   |  |
| نهر النيل    | الاذاعة   | كبسولات ومشاعل اذاعية     | مدار اليوم |   |  |
| الخرطوم      | الاذاعة   | مداخلة صباح الخرطوم       |            | توعية عن كورونا وتثقيف صحي عام واتباع الارشادات           | صفاء السيد – زهراء الخير ادارة تعزيز الصحة       |
|              | التلفزيون | مداخلة اضواء              |            |   | كوثر ادم – محمد صغيرون ادارة تعزيز الصحة         |
| الجزيرة      | التلفزيون | فترات مفتوحة              |            | كورونا توعية عن كورونا                                    | الشراكات عبر الهاتف مدير الرعاية الصحية بالولاية |
|              | الاذاعة   | حوارات ساخنة مستهدف دراما |            | طرق انتشار وباء كورونا وتدابير الوقاية                    | مدير الوبائيات بالولاية                          |
| القضارف      | الإذاعة   |                           | -          | اثر التسلل من الدول المجاورة وتكثيف العمل صحي على المعابر | أ. احمد حجر الطوارثي الصحية                      |
|              | التلفزيون |                           |            | طرق الوقاية والتدابير                                     | ممثل الشؤون الصحية وسط القضارف                   |

# Documentation : central Darfur



# Central Darfur



# Central Darfur

